

2010

Capturx™ Markup for PDF

User Guide



Table of Contents

Capturx Markup for PDF	1
How this Guide is Organized	1
Capturx Markup for PDF Overview	2
Printing and Using the Pen	4
How Printing for Digital Pens Works	4
The Digital Pen.....	4
Charging and Using Your Pen	5
Using the Pen and Docking Station	5
Using the Pen Manager	7
Using the Pen Manager	7
Registering and Activating.....	8
Registering and Activating Your Pen and Software	8
Printing Your Files	14
Printing Your PDF Files with Capturx Markup for PDF.....	14
Writing and Working with Files.....	16
Writing and Docking Your Pen	16
Using Files that Have Been Moved or Printed.....	17
Selecting Color and Thickness of Digital Ink	18
Working with GeoPDF Documents.....	19
Working with AutoCAD Roundtrip	20
Appendices.....	23
Command Line Automation.....	23
Appendix B: Refilling Pattern for Printing	25

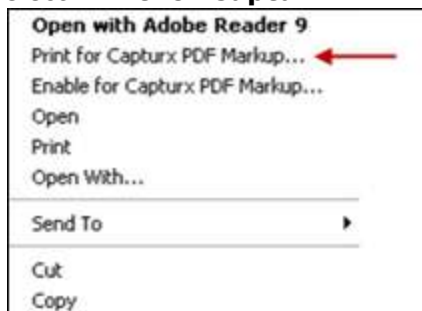


Thank you for purchasing Capturx Markup for PDF

Here are a few tips to help you get started.

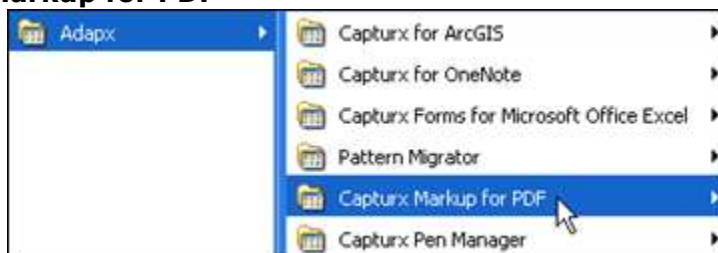
Capturx Markup for PDF is accessed by right-mouse clicking on PDF files from Window Explorer.

- Navigate to the PDF file you wish to print.
- Right mouse-click on the file
- Select **Print for Capturx PDF Markup** to display the printing options



Learn more about how to use this product:

- Watch the [online video](#).
- Consult the user guide found on your PC by selecting **Programs>Adapx>Capturx Markup for PDF**



To see these tips again at a later date, you can access this page by accessing the user guide as shown above.

How this Guide is Organized

The topics and information in this user guide include:

- How the digital pen and printing work

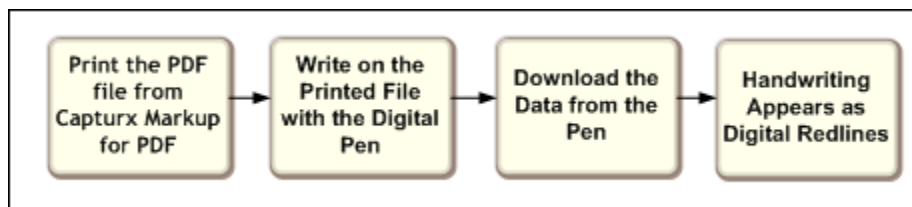
- How to get started, including charging the digital pen
- How to use the Capturx Pen Manager and Capturx Mobile for BlackBerry
- How to register the software and activate the digital pen
- How to digitally enable and print your PDF files
- How to review the annotations you have made
- How to work with digital-pen-enabled files on different PCs for printing and uploading
- How to enhance the capability of Capturx Markup for PDF by using the TerraGo Technologies Toolbar®
- Appendices that list the command line options you can use and how to obtain additional pattern for printing

These sections and topics will help you learn both the basics of digital pen technology and how to use Capturx Markup for PDF.

Capturx Markup for PDF Overview

Capturx Markup for PDF enables teams to markup printed PDF files with a digital pen and have the markups integrated into PDF files as comments. The comments allow teams to see the original handwriting in addition to the date, time and author of the comments.

Using Capturx Markup for PDF consists of four major steps:



Standard Adobe PDF Comment and Markup Tools

With certain Adobe software products, users have permission to annotate with comments and markups for a range of different type of review experiences. Comments or markups appear as clickable markup which can display pop-up notes with the author, date, and time.

When comments and markups are present or enabled for PDF files, Adobe Reader® makes a “Comment & Markup Toolbar” available that helps teams view, search, and manage comments and markups. PDF files can be enabled for commenting by the author of the file using tools in Adobe LiveCycle® or Adobe Acrobat®. To learn more about native PDF support for comment and markup, please refer to the “review and comment” section of the help files for Adobe Reader.

Capturx Markup for PDF creates markups out of handwritten annotations and integrates them into the original PDF files (in direct mode) or into copies of the PDF files (in template mode). Markups appear as red ink, reflecting the traditional “redlining” workflow.

Clicking on a Capturx Markup opens a pop-up note. The pop-up note shows the date, time and author of the markup.

The author reflects the name associated with the digital pen with which the comments were written. This information for each pen can be viewed and edited in the [Capturx Pen Manager](#).

The date and time are when the comments were written on the paper – not when they were downloaded to the PC or integrated into the PDF file. The time displayed is the local time of the person viewing the marked-up PDF file.

Markups Using Capturx Markup Are Permanent

Teams can redline any PDF file with Capturx Markup for PDF, regardless of whether or not it was enabled for commenting by the original author. Markups created with Capturx cannot be edited. Once they are created, they are permanently part of the PDF file into which they have been inserted. Since they are standard PDF markups, they can be viewed and displayed in a range of ways depending on the PDF viewer used. In most cases, teams use the default template mode allows them to insert markups into a copy of the original file. In these cases, the markups are not added to the original file. This prevents teams from making permanent changes to master PDF files by accident.

When teams use Capturx Markup for PDF with files that have been enabled for commenting, the original files and copies remain enabled for commenting. The Capturx markup, however, will not be able to be edited: they are permanent. This enables teams to have lasting records of information as it was captured in the field.

How Printing for Digital Pens Works

Capturx Markup for PDF works with Capturx technology which turns ordinary pieces of paper into extensions of your computer desktop applications. Special digital watermarks are automatically added to print outs to enable them to be read by digital pens. The digital watermark is a pattern of microscopic dots, which is unique for each printed page and appears as a light background. The digital pen has a sensor which reads the dot pattern and tracks its location as you write.

The dot pattern is printed with high precision using black ink, which is the only color "visible" to the digital pen. The information in the file, which is visible to humans, is printed using your printer's yellow, magenta, and cyan inks. Any visible lines that look black are combinations of these colors.

An initial Capturx Markup for PDF purchase includes an amount of unique digital dot pattern: enough to print thousands of pages. Dot pattern is like printer toner: it gets used up as you print. Additional dot pattern is available for purchase and download.

To learn more about getting additional pattern for Capturx Markup for PDF, please contact Adapx Sales at sales@adapx.com or 1.877.232.7903.

Digital-pen-enabled print outs must be made with a 4-color postscript printer. A broad range of printers have been tested for use with Capturx technology including: HP, Okidata, Oce, Ricoh and Canon.

To learn more about specific printers, please visit the [Printer Sample List](#).

See [Charging and Using Your Pen](#) for information on the digital pen and how it is used.

See [Refilling Pattern for Printing](#) for information on how to obtain additional pattern.

The Digital Pen

The digital pen converts any handwritten paper-based information into electronic data that can be integrated into a range of leading software applications you already use.

The digital pen looks and feels like a regular ballpoint pen, but it contains an integrated digital sensor and an image microprocessor. As you write, the digital pen scans your writing in conjunction with a digital watermark that is printed by Capturx Markup for PDF software along with the visual information in your PDF document.

- The digital pen stays charged for five to seven days of typical use with a built-in Lithium-ion rechargeable battery. Charging time is approximately 2.5 hours (150 min), from 0% to 100% via cradle and USB adapter. The digital pen can endure a standby time (without cap) of 10 hours.
- The digital pen can be used for 2 hours (120 minutes) continuously, and can store up to 50 pages of letter sized paper.

- Data Communication with computer: USB 1.1 standard (also supports USB 2.0 standard), Bluetooth® available but NOT currently supported
- For use: 32 to 104 degrees Fahrenheit at relative humidity levels of 10-85%
- For storage: -4 to 113 degrees Fahrenheit at relative humidity levels of 10-90%
- Ruggedness tested on 'standard' 4 foot drop while capped.
- Pen can be used in inclement weather and rain, but it is not submersible.

Charging and Using Your Pen

The pen looks and feels just like an ordinary ballpoint pen and you use it in the same way. There are no keys to press. You activate the pen simply by removing the cap and deactivate it by replacing the cap. The pen needs to be charged before you can use it to capture data.

To start using the pen:

1. You may need to place the ink cartridge in the pen. To place the cartridge in the pen, take one of the ink cartridges and gently slide it into the hole at the tip until it is completely seated and does not fall out. It is normal for the cartridge to feel slightly loose.
2. Attach the docking station to a PC or laptop via the USB port.
3. Fully insert the pen in the docking station.
4. The gold connection points on the pen and docking station need to be aligned and the pen needs to be firmly placed in the docking station.
5. After you connect the USB port to your computer and dock your pen, you will initially need to keep the pen in the docking station for four hours for it to fully charge.

Note: To prevent your battery from running low, do not leave the cap off the pen for extended periods of time.

See [How Printing for Digital Pens Works](#) for information on how the digital pen and paper work together to capture your data. For information on how to use the pen and docking station to upload data, see [Using the Pen and Docking Station](#).

Using the Pen and Docking Station

After you have made your markups and you are ready to download your data, you need to connect the docking station to your computer and insert the pen. The following section takes you through that process.

The docking station is used to dock your pen and to connect your pen to a PC or laptop via the USB port. The docking station consists of the base, insert, and the USB connector you use to connect the docking station to your computer.



To download the digital ink using the pen

1. Attach the docking station to a PC or laptop via the USB port.
2. Fully insert the pen in the docking station. The gold connection points on the pen and docking station need to be aligned and the pen needs to be firmly placed in the docking station.
3. After you connect the USB port to your computer and dock your pen, a Status Window will also show you the progress of the download.

Using the Pen Manager

With Capturx Markup for PDF software, you will also receive the Capturx Pen Manager. Optionally, you can purchase Capturx Mobile for BlackBerry if you plan to use your digital pen with a BlackBerry device.

Capturx Pen Manager

You should install the Capturx Pen Manager before you install Capturx Markup for PDF. Pen Manager allows you to manage the ink you upload when you dock your pen. Using Pen Manager, you can:

- Send the file containing the ink via email to a computer with Capturx Markup for PDF installed.
- View the remaining time left on the battery of the pen.
- Download and delete the pages currently stored on the pen.
- Set how you want the pages to download.
- Enter and save personal details to the pen.
- Enable or disable the Bluetooth feature on the pen.

For more information on Pen Manager and its features, see the installed user guide:

Click **Start>Programs>Adapx>Capturx Pen Manager>Capturx Pen Manager User Guide**

Capturx Mobile for BlackBerry

Capturx Mobile for BlackBerry allows you to use your BlackBerry mobile device to send your pen data using the Anoto Pen Utility Card. Using Capturx Mobile, you can:

- Pair BlackBerry devices with your digital pen.
- Use your BlackBerry to send the file containing the ink via email to a computer with Capturx Markup for PDF installed.
- Use the GPS mode to set GPS setting to use with your BlackBerry
- See a log of recent activity with a date and time stamp.
- Easily email Adapx product and technical support.

For more information on Capturx Mobile for BlackBerry and its features, see the [Capturx Mobile for BlackBerry](#) user guide.

Registering and Activating Your Pen and Software

To begin using Capturx Markup for PDF, you will need to complete the following steps for registering your software and activating your digital pen(s). The steps include:

- Registering your software
- Activating the pen
- Registering the digital pen(s)
- Importing the digital pattern for printing from your digital pen
- Moving digital pattern from previous versions of Capturx software to the current version of Capturx Markup for PDF

Registering and Activating Your Software

You register and activate your Capturx software by filling out a registration form and you activate the software by docking the pen. When you first open Capturx Markup for PDF, you will see the following activation screen:



The green arrow shows you the step you are on in the activation process. To register your software with Adapx, select the **Next** button. This will open the Register Software form.

Register Software

Name:

Email:

Phone Number (optional):

Company:

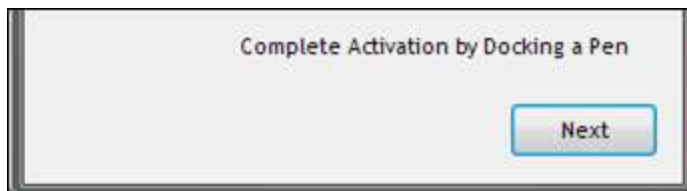
Valid registration information is required for customers to receive important maintenance and support. If you are unable to submit the registration online you can save the information and email the registration file to sales@adapx.com

I have read and agree to the terms of the Adapx Privacy Policy. [Adapx Privacy Policy](#)

To complete the registration process:

1. Fill in the form with the required information.
2. Select the **Save** Button to save your registration information. Select the **Remind Me Later** button if you want to complete the form later.

To complete the software activation, dock the pen and select the **Next** button



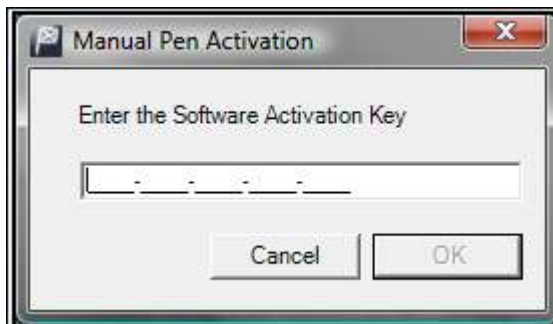
Registering and Activating Your Pen

The first time a pen is docked, you will see the Capturx Pen Startup Wizard. The green arrow shows you the step you are on in the activation process. The check mark denotes the parts of the process that have been completed and the warning sign denotes a procedure that failed.



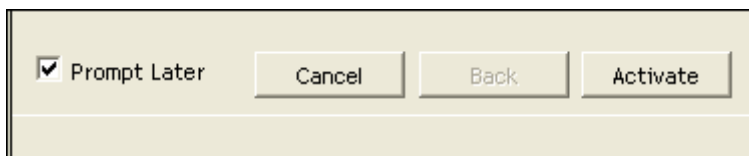
All new pens shipped with Capturx Markup for PDF have been activated. If you are using a pen that was purchased with different software, you may need to manually activate the digital pattern for use.

1. Select the **Use Offline Key** button.
2. The Manual Pen Activation window will appear. Enter the key you received from Adapx Sales.
3. Enter the key and select the **OK** button.



To register your pen:

1. Select the **Activate** button to open the registration form.



1. Fill in the form with the required information.
2. Select the **Save** button to save your registration information. Select the **Remind Me Later** button if you want to complete the form later.

If your connection uses a proxy server, you may have to enter proxy information to complete the activation.

To provide the proxy information:

1. The Proxy Settings window will appear when you select **Activate**.

2. Check the **Use the Following proxy setting** check box and enter the proxy address for your company and select the **OK** button. Ask your systems administrator if your proxy uses a secure protocol.
3. Depending on how your systems administrator, selecting OK may require authentication. If so the following dialog will appear:



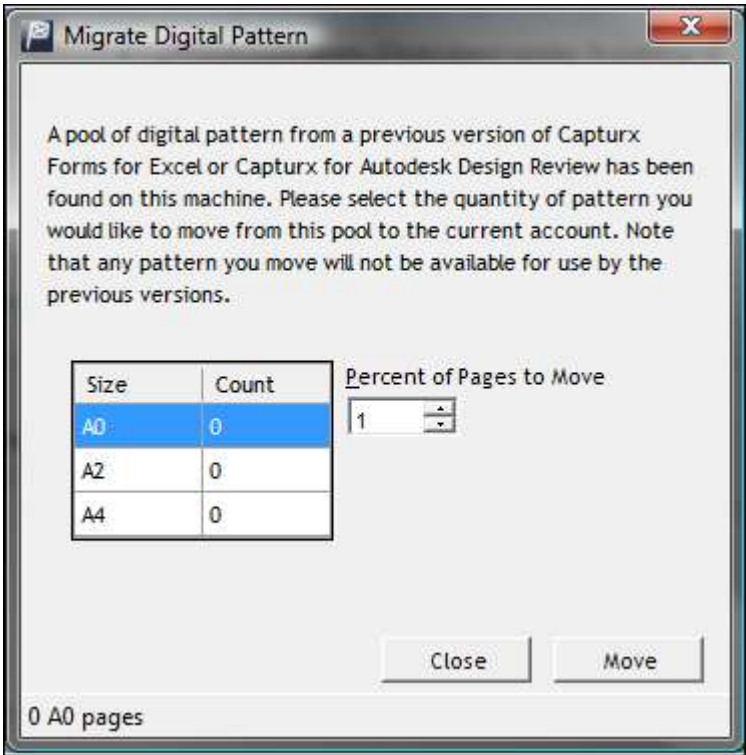
4. Enter your User Name and Password and select the **OK** button

Optional: To migrate digital pattern from previous versions of Capturx software:

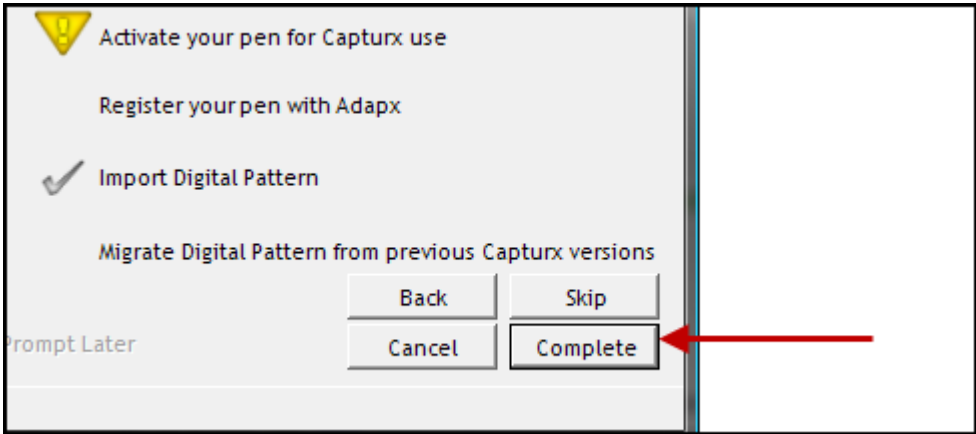
1. Select the **Migrate** button.



2. The Migrate Digital Pattern window will appear. Using the Size and Count table provided as a guideline, select the percentage of pages to move and select the **Move** button.



When you have completed the procedures for registering and activating your pen, select the **Complete** button at the bottom of the wizard.



Printing Your PDF Files with Capturx Markup for PDF

In Windows Explorer®, select the PDF file that you want to print, right-mouse click to bring up the Windows context menu and print. Below is a list of the available print options.

Selecting the Print for Capturx PDF Markup option:

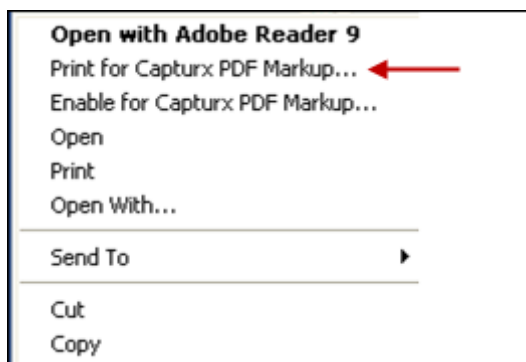
- Opens a Capturx Markup for PDF print dialog in Windows Explorer
- The Print for Capturx PDF Markup command will automatically generate a unique digital watermark which will be sent to your printer along with the data in the file. See [How Printing for Digital Pens Works](#) for more information about the digital watermarks are used in the printing process.
- Prints the PDF document you have opened.

Note: When printing your PDF files you need to be aware of the following:

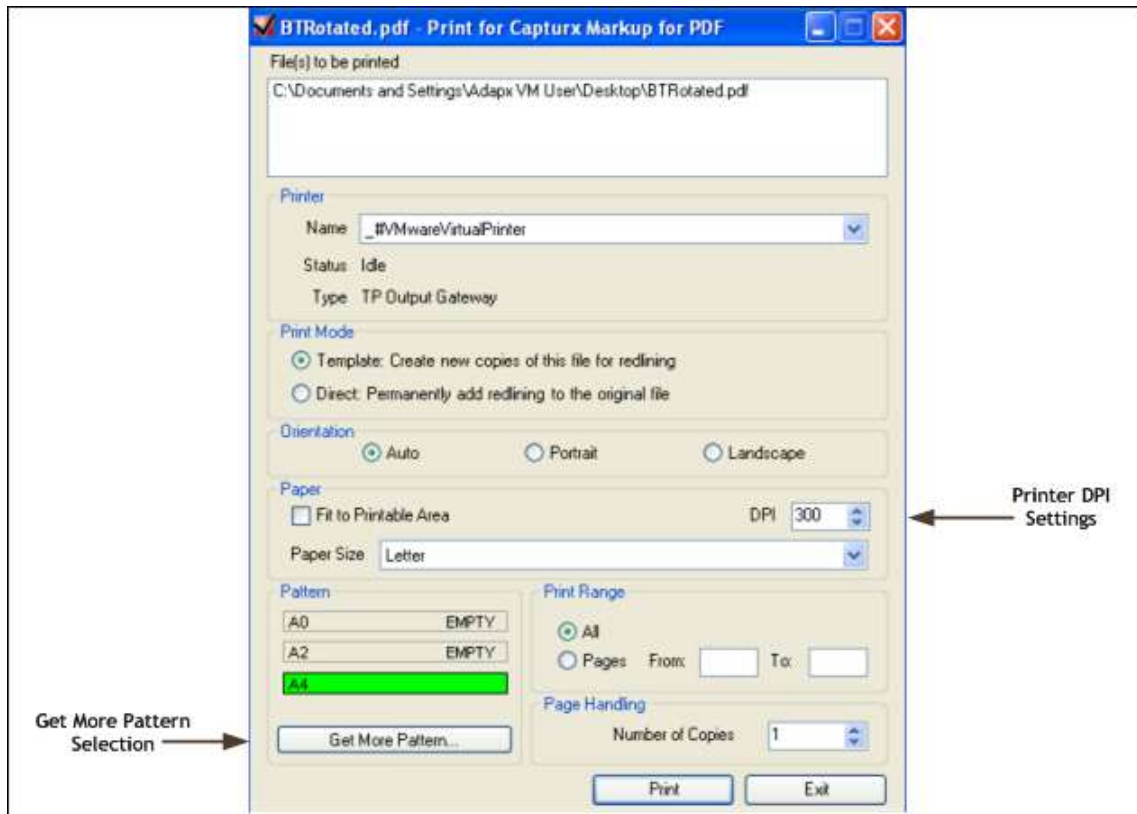
- To enable markup from a digital pen, the user must print from the Capturx application, not the PDF viewer.
- You can print in either "Template" or "Direct" mode. When you select the template option, new copies of the file with a number prefix suffix are created for redlining. When you select the direct mode, digital redlines will be added to the original file.
- Although 3D PDF files will print, the markup may present problems when you download the ink. We encourage teams to print 2D PDF files.
- If you select other files for printing while a print operation is already in progress, you will receive message that you need to retry after the current print job is finished.

To print your file(s):

1. Right-click on the selected file(s) and select **Print for Capturx PDF Markup**. Note that Windows Explorer limits the number of files you can select using this method.

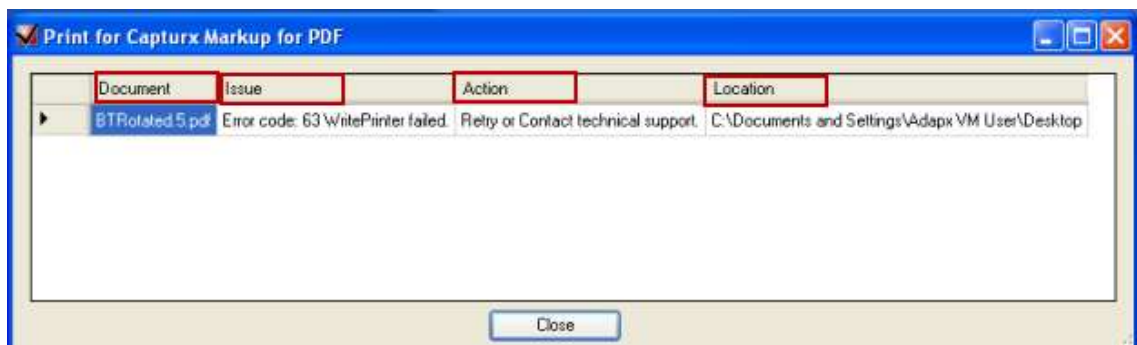


2. This brings up a Print Dialog. Choose the desired options and select **Print**.



If there are any issues or problems with the printing processes, you will see a window that shows you:

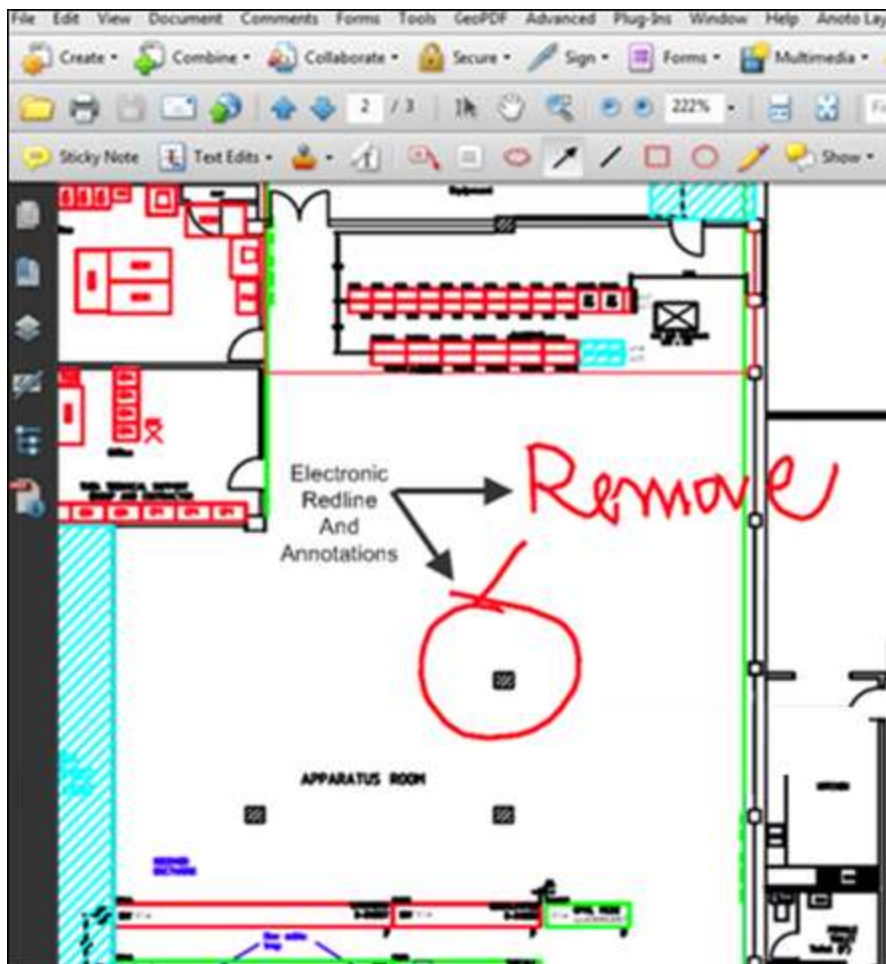
- The name of the PDF document
- The issue or problem involving this document
- The action to take resolve the issue
- The location



Writing and Docking Your Pen

After you have printed a PDF file with Capturx Markup for PDF on a qualified printer, you will see the digital watermark as a light grey background on the page. As you write on the page, the digital pen scans the handwriting and records its location with respect to the watermark. When the digital pen is docked, the [Digital Pen Manager](#) will transfer the data using Capturx technology which will insert the right data in the right files.

In the case of Capturx Markup for PDF, the red lines and annotations will be inserted into the corresponding PDF files. The PDF files will open in whatever default application is associated with the PDF file type. Your handwritten redlines will appear on the page as electronic redlines. You can view the name of the person associated with the pen and the time of the upload by right clicking on the ink and selecting **Properties**.



Note: In order for your annotations to be correctly captured, you need to draw inside of the PDF page margins, even though these may be smaller than the digital pattern on the page. If you write outside of the page area, the digital ink may still be visible when you zoom out, but may also get clipped by the viewer.

Using Files that Have Been Moved or Printed

The Capturx technology installed on each computer keeps track of the digital watermarks that it has printed in order to match it with data coming off any digital pen. With Capturx Markup for PDF, files can be printed on one computer and then moved to a different computer for digital ink download, if you use the following processes.

Moving or renaming files:

If a file has been moved or renamed, then any computer that is a recipient of that file's digital ink must be made aware of those changes. The following "Enable for Capturx PDF Markup" describes that process.

Printing files from shared folders:

Capturx Markup for PDF can be used with PDF files on shared folders, providing an easy way for teams to work with a common PDF repository and collect markups to a central location.

After files are printed from a shared file location, those files also need to be registered with any local computer that could be the target for receiving ink markups, and this registration process needs to be performed for each user. So, if multiple users are sharing the same machine, each of them will need to enable the shared file. The process described below "Enable for Capturx PDF Markup" describes how to enable the server-based PDF files for digital ink upload from any given computer.

Enable for Capturx PDF Markup

To enable a moved file for Capturx PDF Markup, navigate to the file using Windows Explorer. Right mouse click the file and select Enable for Capturx PDF Markup. This will register the file and changes into the Capturx Markup for PDF database to ensure that the appropriate markups get integrated into the right files.

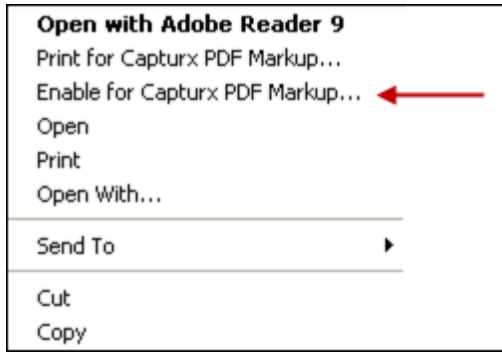
Note: If you have renamed or moved a file after you print, you may get an error message when you dock the pen telling you that the PDF document could not open. To download the ink from this document:

1. Enable the renamed or moved file using the steps described in this section.
2. Import the ink by using the stand-alone application accessible at: **All Programs>Adapx>Capturx Markup for PDF.**
3. Select **Import Markup for PDF.**

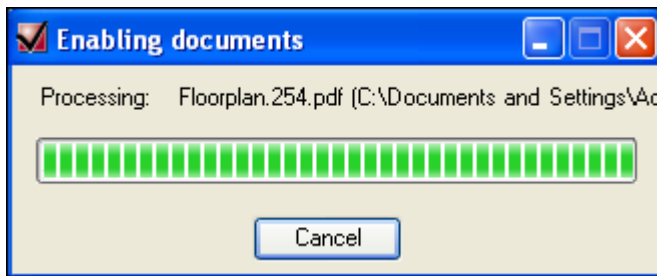
You can also wait until you have new ink to import. The next time you dock the pen, the new ink is imported along with any previous ink that is waiting to be imported from a previous document

To enable your file(s):

1. Right-click on the selected file(s) and select Enable for Capturx PDF Markup. Note that Windows Explorer limits the number of files you can select using this method.

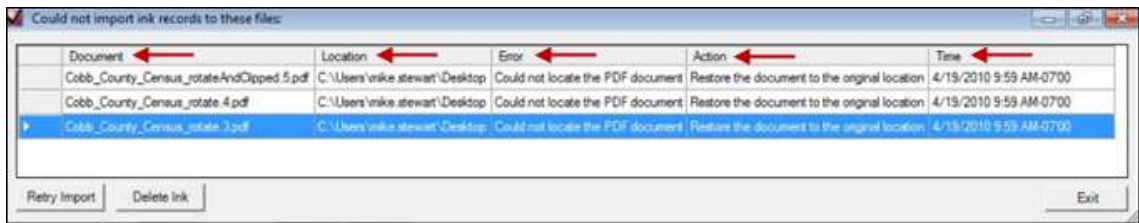


You will see a progress bar and system tray notification:



If there are any issues or problems the processes, you will see a Processing Summary window. This window shows you:

- The name of the PDF document
- The current location of the document
- The issue or problem involving this document
- A proposed action to help you solve the problem
- The time and date the document was imported



Note: If the progress window has been minimized, you can right-click on the System Tray icon and select **Restore** to view the progress.

Selecting Color and Thickness of Digital Ink

By default, your markups will display as red, 1-point lines. If you want to change the color of the digital ink, touch the tip of your digital pen to the desired color on the provided card.

From that point on, your markups will be saved as the new color until you select a new color or cap your digital pen. **Note:** When the pen is capped, the digital ink will return to the default red color.

Selecting digital ink thickness works the same way as selecting a color. **Note:** When the pen is capped or docked, the digital ink will return to the default 1-point thickness.

Working with GeoPDF Documents

You can enhance the capability of Capturx Markup for PDF by downloading a free version of the TerraGo Toolbar® provided by TerraGo Technologies®. This toolbar is an extension of Adobe Reader that allows users to view, mark up, and interact with geospatial information.

Since the annotations you write on the GeoPDF documents are automatically geo-registered, you can use the Toolbar to export these annotations. For example, you can export as a KML file which can be viewed with Google Earth® and Google Maps®. This section describes how to export these annotations using the TerraGo Toolbar "Export GeoMarks" function.

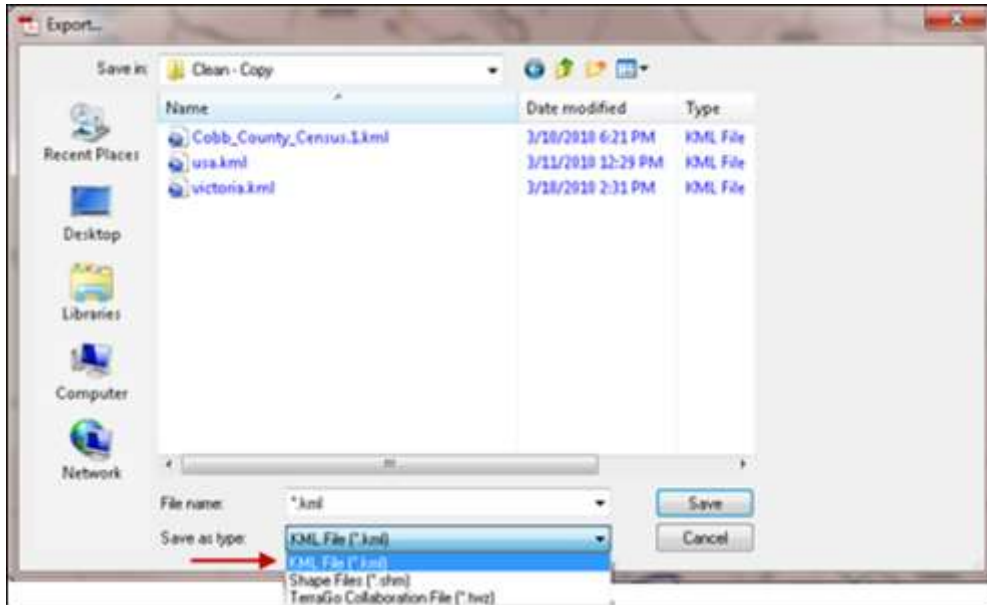
For more information on this Toolbar (and for download instructions), select the Products tab on the TerraGo [homepage](#).

To export the annotations using the TerraGo Toolbar:

1. Open a PDF file which has been geo-enabled by publisher software, such as TerraGo Composer.
2. Make annotations by using Capturx Markup for PDF software and/or using the TerraGo Toolbar.
3. Select **GeoMark Toolbar>Collaboration>Export GeoMarks**.



2. Choose to export to a KML or to a Shape (ESRI) file:



These exported files can now be opened using Google Earth (KML) or ESRI ArcMap (Shape files). The annotations you made are shown on a map with coordinates that correspond to their position on the paper printout you marked with the pen:

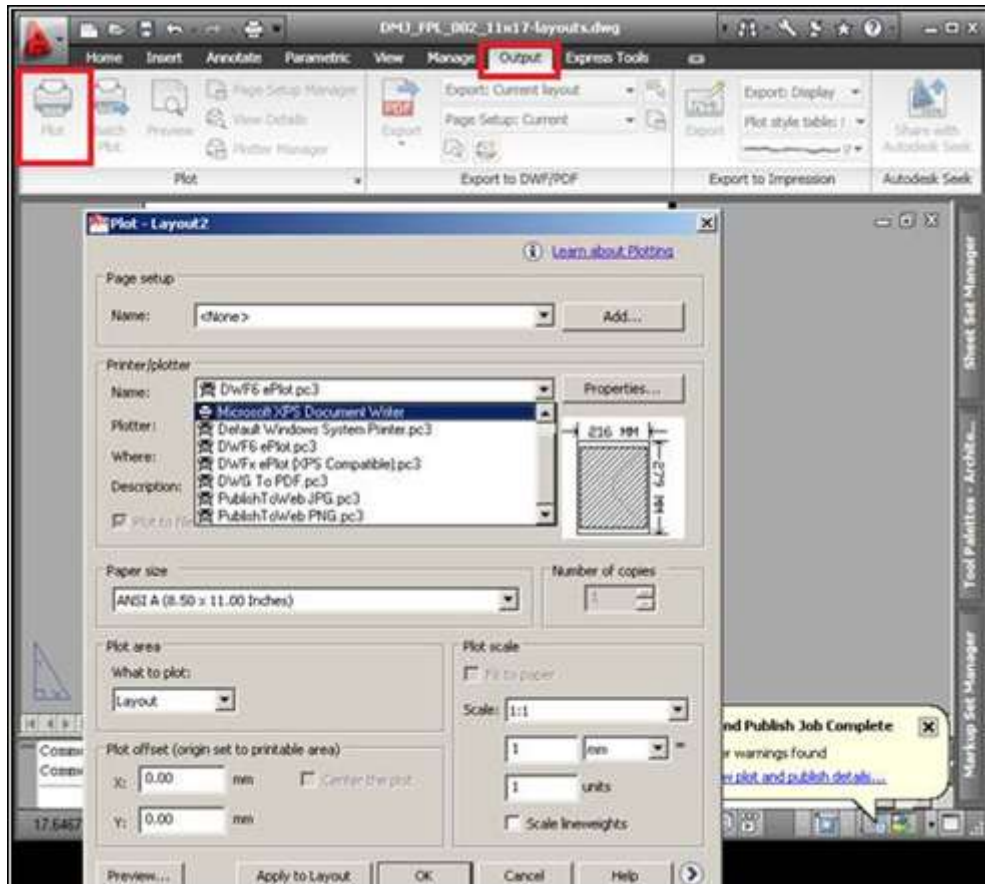


Working with AutoCAD Roundtrip

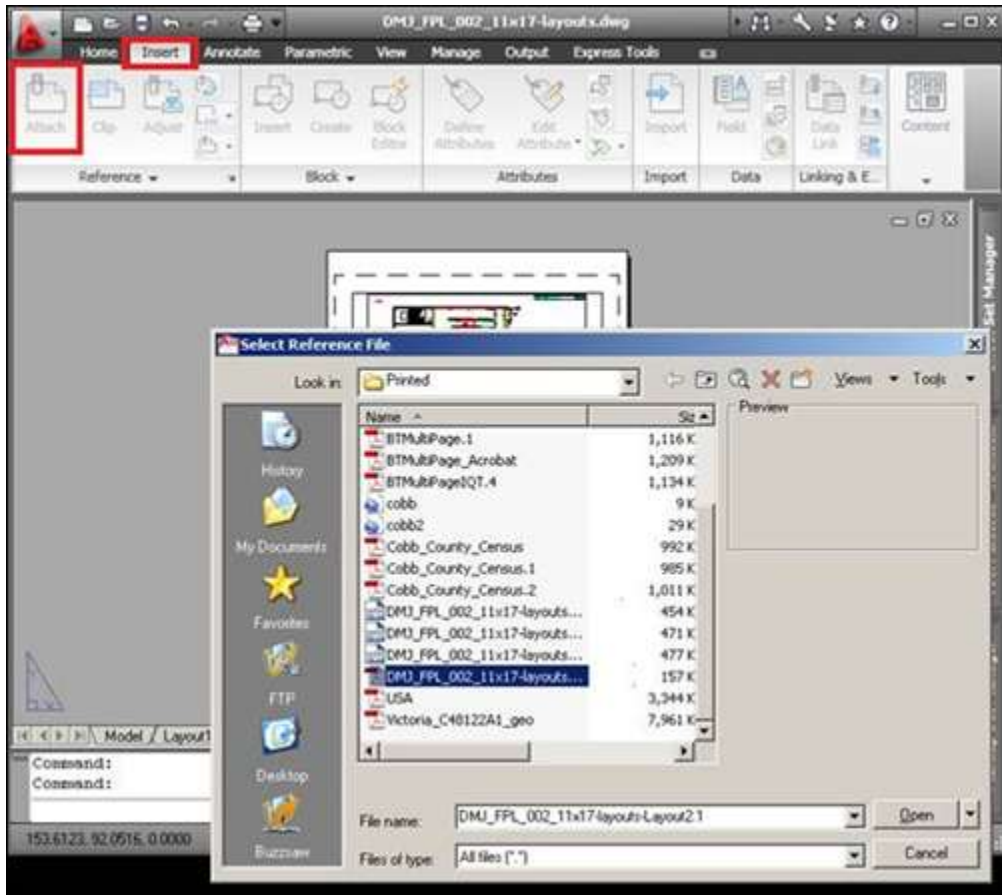
PDF documents plotted from AutoCAD® layouts can be marked with the pen and opened using AutoCAD, where they are attached as a reference. Using Capturx Markup for PDF, the annotations can be seen so CAD operators can quickly locate and correct their annotations. This section describes how to generate a PDF document and reload it into AutoCAD.

To generate the PDF document and reload it into AutoCAD:

1. Open the desired DWG file.
2. Navigate to one of the Layouts and plot it to PDF by selecting **Output Tab>Plot>PDF plotter**. You can also use **Export to PDF** in the same tab.



3. Print this PDF file with Capturx Markup for PDF and mark it with the pen.
4. Return to AutoCAD and zoom/pan your original layout so you can view the entire page. You will need to view the entire page to align the imported PDF.
5. From the Insert tab, select **Attach** and browse to the marked up PDF and select the desired file.
6. Select **Open**.



5. Align the red outline with the bottom left corner of the Layout. The size should already be the same. Select **Enter** (without moving the mouse) to make it "stick".

Command Line Automation

Capturx Markup for PDF also allows you to perform procedures by typing commands at the Windows Command Prompt. Entering commands in this way allows you to automate tasks via batch files that incorporate a series of actions that are routinely performed. The following section lists commands that can be useful when working with Capturx Markup for PDF from the command line.

Note: When using the command line, you do not have the option to select "Template" mode to create new copies of the file when you print (see [Printing Your PDF Files](#)).

Command Line Flags

The following standard DOS/Windows command line behavior applies:

- `sss` is an appropriate string, and `nn` is a positive integer.
- All flags start with `/` and if it has a value, it is separated by the flag by a colon- (':')
- There should be no space character inside a flag or between a flag and value pair. If a space is required inside a value, the value must be quoted e.g. "IO Printer 2001".

Command Line Option	How This Option Is Used
Printing from command line	<p><installdir>\Print <file1> <file2> ...<option1> <option2></p> <p><installdir> is the folder selected during installation. By default it is set to be:</p> <p><i>"%localappdata%\Programs\Adapx\Capturx Markup for PDF\1.1"</i></p> <p>Note: Any number of files may be specified (within command-line size limits of Windows); they will all be printed with the same options specified on this line. You do not need to specify any options but must specify at least one file.</p> <p>The document is printed in Direct mode, i.e. imported ink is applied to the document itself. If a template behavior is desired, include commands to copy the document and print the copies.</p> <p>In Windows XP, the variable %localappdata% may not be set. Replace it by %HOMEPATH%\Local Settings\Application Data\,</p>
/fittopage	Zooms/shrinks the page image to fit on the page (default: off).
/printer:sss	Printer `sss` will be chosen as the target for all these files on this line. (default: user default printer as set in Windows.)
/firstpage:nn	The first page of doc printed will be nn (no default.)
/lastpage:nn	The last page of doc printed will be nn (no default.)

/orientation:sss	'sss' sets orientation; must be 'portrait' or 'landscape' or 'automatic'. (default: automatic)
/papersize:sss	'sss' must be the string name of some valid papersize found on the specified or default printer, e.g. 'Letter', or 'automatic' for automatically chosen paper size. (default: the default paper size of the printer.)

Command Line Option	How This Option Is Used
Enabling documents for Capturx Markup for PDF	<p><installdir>\Enable <file1> <file2> ...</p> <p><installdir> is the folder selected during installation. By default it is set to be</p> <p>"%localappdata%\Programs\Adapx\Capturx Markup for PDF\1.1"</p> <p>Note: Any number of files may be needed (within command-line size limits of Windows. In Windows XP, the variable %localappdata% may not be set. Replace it by %HOMEPATH%\Local Settings\Application Data\,</p>

Command Line Option	How This Option Is Used
Importing pending ink for Capturx Markup for PDF	<p><installdir>\Import</p> <p><installdir> is the folder selected during installation. By default it is set to be:</p> <p>"%localappdata%\Programs\Adapx\Capturx Markup for PDF\1.1"</p> <p>Note: No parameters are specified. The data that is already stored in the machine from previous failed import attempts will be re-processed as if a pen containing the ink had just been docked.</p> <p>In Windows XP, the variable %localappdata% may not be set. Replace it by %HOMEPATH%\Local Settings\Application Data\,</p>

Command Line Examples

Command Line Example	How This Option Is Used
Printing all PDF documents in a folder	<p><i>for %f in (*.pdf) do " %localappdata%\Programs\Adapx\Capturx Markup for PDF\1.1\Print.Ink " "%f " /fittopage /papersize:letter</i></p> <p>This prints all PDF document in the current folder, fitting to page, to letter sized pages. Printing is performed in Direct mode, meaning that ink is imported directly into these documents.</p>

	<p>If a Template behavior is desired, a copy command should be employed, e.g. copying all document of a folder containing the master documents to a new folder containing the copied instances that will get inked:</p> <pre>mkdir c:\newinstances copy c:\templates*.pdf c:\newinstances for %f in (c:\newinstances*.pdf) do "%localappdata%\Programs\Adapx\Capturx Markup for PDF\1.1\Print.Ink " "%f "</pre>
<p>Enabling all PDF documents in a folder</p>	<pre>for %f in (*.pdf) do "%localappdata%\Programs\Adapx\Capturx Markup for PDF\1.1\Enable.Ink " "%f "</pre> <p>This enables all PDF documents in the current folder, so that ink applied to printouts produced from these documents in some other machine (or by another user of this a machine) can be imported in the machine executing this command.</p> <p>Replace "(*.pdf)" by some valid path to operate on files on a specific folder, e.g</p> <pre>"(c:\Documents\CurrentInstances*.pdf)".</pre>
<p>Import pending ink</p>	<pre>"%localappdata%\Programs\Adapx\Capturx Markup for PDF\1.1\Import.Ink "</pre> <p>This causes all the pending ink that might not have been imported successfully in previous attempts to be re-processed.</p>

Appendix B: Refilling Pattern for Printing

During the course of ordinary usage during a year, most customers will not need to obtain addition pattern. If you do a lot of printing, you may need to refill digital pattern at some point during use of the Capturx Markup for PDF.

Pattern is placed on individual personal computer as part of the Capturx Markup for PDF installation and pen activation process. Pattern is made available for use by being unlocked by keys. If you purchased Capturx Markup for PDF and a digital pen at the same time, then your initial amount of pattern, also known as a shelf, will be unlocked by a key included on the digital pen.

If you need to get more pattern on any given PC, you can:

- Order a new shelf of pattern, for which you will be sent a new key.
- Migrate pattern from another desktop that is running a Capturx product

To learn more about both of these options, contact Adapx Sales at sales@adapx.com or 1.877.232.7903.