

2010

Capturx Mobile for BlackBerry®

User Guide



Contents

Using Capturx Mobile for BlackBerry	3
How to Access Capturx Mobile for BlackBerry.....	5
Using the Activity Screen	6
Using the General Configuration Options	8
Using the GPS Configuration Options.....	10
Using the Capturx Tools Options	13

Using Capturx Mobile for BlackBerry

The following section outlines the requirements and general process for using Capturx Mobile with your BlackBerry.

What you need

The Mobile Client can be installed on the most recent BlackBerry models (operating system 4.3 or greater, 4.5+ recommended.) Capturx Mobile for BlackBerry has been designed and tested for the BlackBerry Curve. Although others models may work, the Curve is the only officially supported model.

Using the Capturx Mobile for BlackBerry Overview

The following steps show you how Capturx Mobile for BlackBerry fits into the overall process of using your pen to gather and upload data:

1. Pair the pen with your BlackBerry.
2. Use the [General Configuration](#) options to select the destination and upload method.
3. Print your map or form.
4. Use your digital pen paired with your BlackBerry device to write on the map or form.
5. Use the pen to select the Send Pen Data box on the Capturx Pen Utility Card to send Phone data to your BlackBerry.

The file created on the pen

The files created on the pen do not require much memory, and single pages tend to be only a few kilobytes in size. The client is installed on the BlackBerry so that it auto-starts and waits for data to act on. If the client is not active, the pen will respond by "buzzing" when you attempt to upload the data to the BlackBerry. You will not lose any data – the data remains safely in the pen until the client can be reactivated and you re-try the upload.

Pairing the BlackBerry with the pen

Your pen must be Bluetooth enabled to pair with your BlackBerry. Although your pen is already Bluetooth enabled, you can, however, ensure the Bluetooth status box is checked in the Pen Docking section of the Capturx Pen Manager.

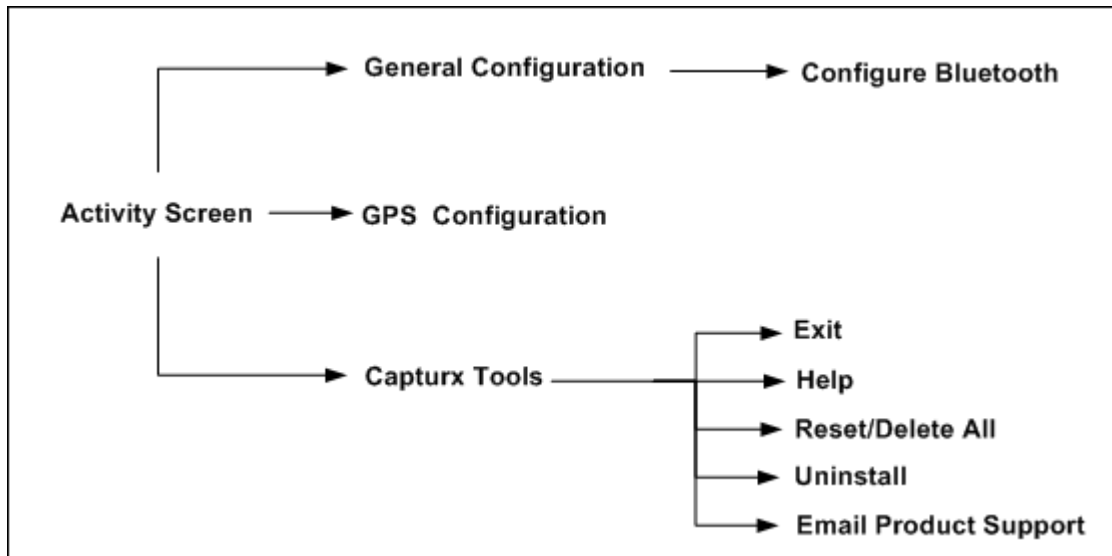


In order to use the digital pen with the phone, the pen and the phone must be "paired". This pairing is done when a new pen is to be used. A phone can be paired with multiple pens, but a pen can only be paired with one mobile device at a time. See [Using the General Configuration Options](#) for instructions on how to pair the pen with the BlackBerry.

The Capturx Mobile for BlackBerry has three main screens

- **The Activity Screen**
This is the main screen that shows a log of recent activity with a date and time stamp. The last 30 items are retained. From here you can access the General Configuration screen, the GPS Configuration screen, and the Capturx Tools dialog.
- **The General Configuration Screen**
This screen is used to enter user and connection information that the application requires or invoke the BlackBerry Bluetooth configuration screen for pairing and deleting pen devices.
- **The Global Positioning System (GPS) Configuration Screen**
This is where you set the GPS mode and other GPS parameters
- **The Capturx Tools Screen**
This provides you with tools and options for working with and supporting the Capturx Mobile for BlackBerry

The following figure shows these screens and how they are related:



The following topics will help you become familiar with Capturx Mobile for BlackBerry and how it is used:

- [How to Access Capturx Mobile for BlackBerry](#)
- [Using the Activity Screen](#)
- [Using the General Configuration Options](#)
- [Using the GPS Configuration Options](#)
- [Using the Capturx Tools Options](#)

How to Access Capturx Mobile for BlackBerry

To access the Capturx Mobile for BlackBerry screens and options:

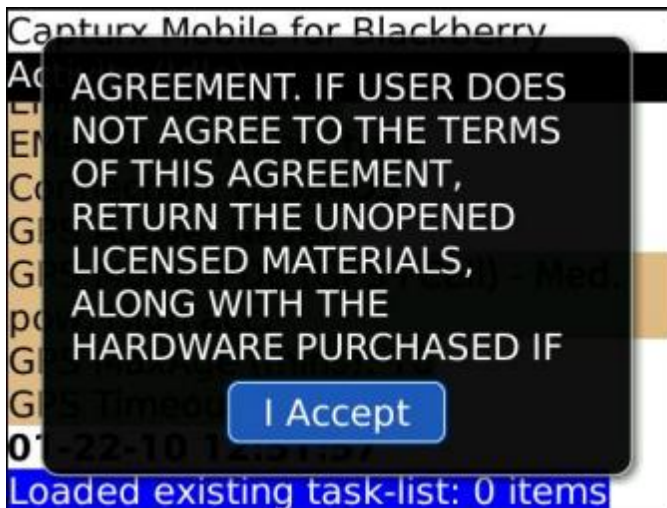
1. Select the **Download Folder**. The icon is contained in this folder. The following screens show the folder and the icon as current and about to be selected:



2. Since Capturx is accessing Bluetooth, the first time you start your phone after the Capturx Mobile for BlackBerry is installed, you will be asked if you want to grant our application full trust. Select **Yes**.
3. When the client first runs, you may be asked to enable Bluetooth (even if Bluetooth is already enabled). Select **Yes**.



4. You will be presented with the End User License Agreement. You must accept this agreement to run the application. Review the terms and select **I Accept** to continue.

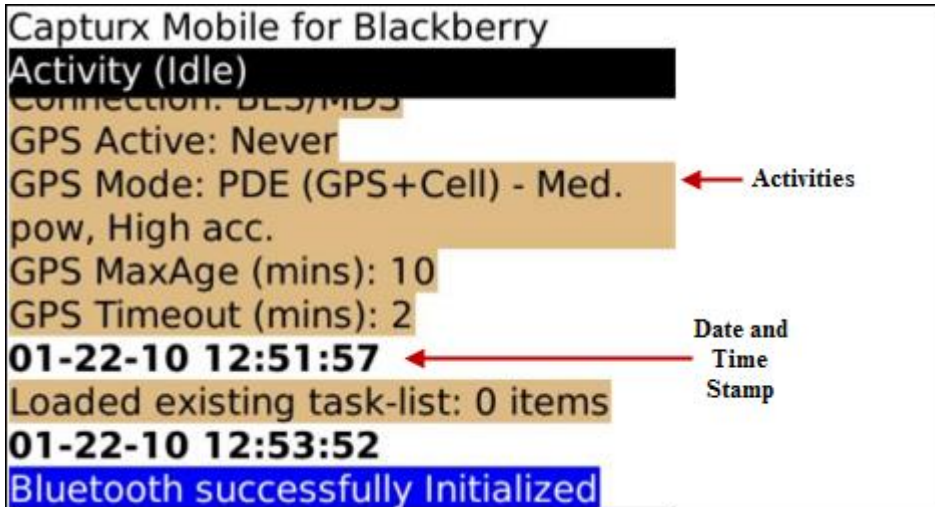


You can now access the Capturx Mobile for BlackBerry screens and options.

Using the Activity Screen

The Activity Screen is the main screen for the Capturx Mobile for BlackBerry and the first screen shown if the application is brought to the foreground. The Configuration and Capturx Tools options are also accessed from this screen.

The Activity Screen shows a log of the last 30 activity items, and each item is preceded by the local date and time. You can scroll through these items to view the activities performed with the Capturx Mobile for BlackBerry and when these activities were performed



Note: An activity item can contain more than one line, and adjacent items with identical text are coalesced as shown below. Items that begin with the string "GPS:" are also coalesced in this manner.

GPS Mode: PDE (GPS+Cell) - Med. pow, high acc
 Loaded existing task-list: 0 items
 Loaded existing task-list: 0 items
 Loaded existing task-list: 0 items

Will appear as:

GPS Mode: PDE (GPS+Cell) - Med. pow, high acc
 Loaded existing task-list: 0 items
 Repeat:3

Note: If you try to exit the activity screen by using the Back button from the Configuration screen, the following screen is displayed:



Using the General Configuration Options

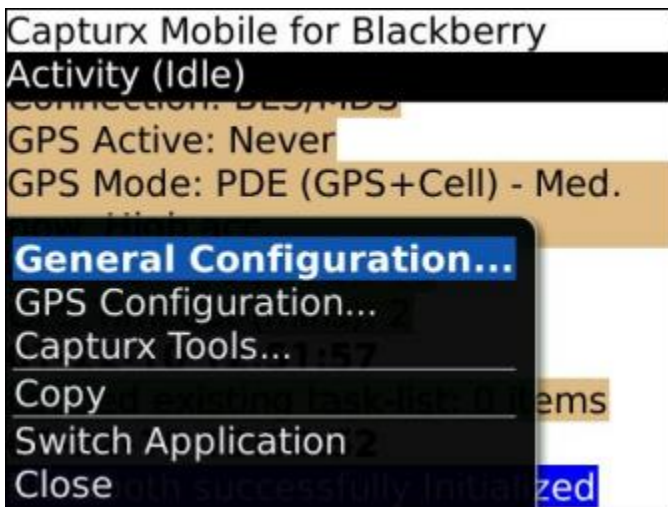
The General Configuration screen allows you to change the following settings:

- The server URL you will specify as the destination for your pen data
- The email account you will use with the account
- The upload method for sending your data

You can also use this screen to select either Server or Email for your upload option.

To access the General Configuration screen:

1. Press the **Menu** key.
2. Select **General Configuration**.



This will open the General Configuration screen



The mobile client needs to know the address of your Capturx Forms Server mobile upload service. (If you are unsure of this setting, please see the administrator who provided your Capturx installation.)

To specify the Capturx Forms Server URL:

1. Scroll to Server URL.
2. Enter the desired URL.

Your email address is used for uploading pen data to the desktop (it is not used directly in Capturx Forms Server installations), and is used in conjunction with product support.

To specify your email address:

1. Scroll to Email address field
2. Enter the desired email address.

To specify the upload method you want to use with your data:

1. Scroll to upload method option.
2. Select the **Capturx Server** or **Email** upload option.

If you are using Adapx' Capturx Forms Server product, select **Capturx Server**; if you are using an Adapx desktop product, choose **Email**.

You can also select the **Open email before sending** option if you want an email to open before your data is uploaded to the server. This email can be used for any additional notes or attachments you want to send (Applicable in email mode only).

Pairing Bluetooth with Your Pen

In order to pair a BlackBerry device with the digital pen, the Bluetooth device must be in pairing mode. Most Bluetooth devices are not set to pairing mode by default.

S

1. Uncap your pen. When the pen is first uncapped, it is "discoverable" and in pairing mode.
2. On the BlackBerry device, from the home screen, select **Manage Connections>Setup Bluetooth**. Select **Listen** or **Search** to search for the digital pen signal.
 - The Select Device list appears and lists the devices that are in range and available to be paired.
3. If you selected Listen, use the Capturx Pen Utility Card and check the **Bluetooth Pair to Phone Checkbox** found on the back of the card.
 - Once the two devices sync, the Bluetooth device list appears.
4. Select digital pen device name, "DP-201.
5. A dialog appears requesting **Enter Numeric Pass Key**. Enter the 4 digit pin number of the digital pen.

Note: if you don't see the pen in the list of devices, cap and uncap the pen again so it will set itself to be discoverable and refresh the list of devices on the BlackBerry.

Using the GPS Configuration Options

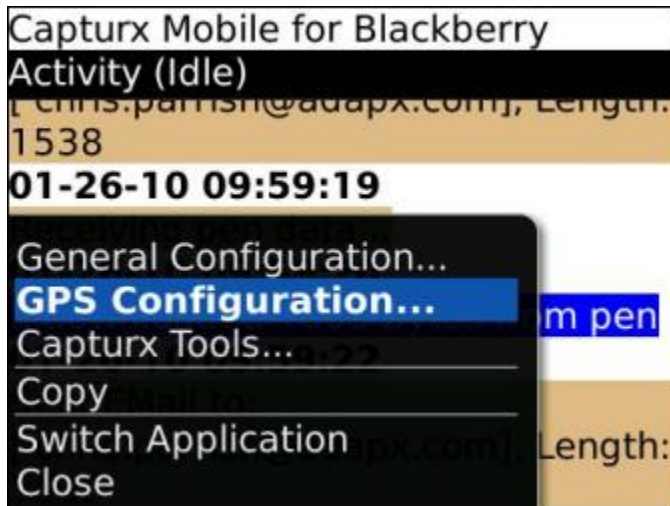
The Global Positioning System (GPS) is a group of Earth-orbiting satellites that allows you to determine the time and the longitude and latitude coordinates for where you were when you uploaded a form to the Capturx Server.

The Capturx Mobile for BlackBerry supports GPS by placing GPS location coordinates in your uploaded data based on the GPS settings you have selected. Several settings affect the operation of GPS. The following topic takes you through the GPS Configuration options and provides a list of recommended settings.

The GPS Configuration screen enables you to set GPS parameters you will use with your Capturx Mobile for BlackBerry.

To access the GPS Configuration screen:

1. Press the **Menu** key.
2. Select **GPS Configuration**.



This will open the GPS screen that allows you to set the GPS-specific options and values.

Capturx Mobile	
GPS Configuration	
Active:	Never
Mode:	PDE (GPS+Cell) - Med. pow, High acc.
Timeout (mins):	2
Max re-use age (mins):	10

GPS Screen Options	How it is Used
Active	<p>The Active option enables you to choose three different selections:</p> <ul style="list-style-type: none"> • In the Never mode, the GPS unit is only activated if it is being used by another application. Whether the GPS unit is active or not, no location information is sent when set to Never mode. • In On Demand mode, the GPS unit is only activated when the application requires GPS information because new items are uploaded to the phone and a file is about to be sent. Since a GPS lock can take between 30 seconds and several minutes, using this mode can delay the sending of items. • In Always mode, the application keeps GPS active all the time. This is the preferred mode to use if GPS is required for the application. This mode may, however, drain the battery and you may prefer to use On Demand mode instead. <p>Note: If you require a GPS location, you should choose Always, unless this selection would drain your battery. By choosing Always you have the best chance of having a current or recent GPS signal (even if one is not available at send-time), so ink can be sent immediately without waiting for a GPS lock. Choosing On Demand conserves the battery, but can cause the application to try and wait until a signal is received, up to the timeout. When the GPS is Disabled or off, no location data will be associated with your forms.</p>
Mode	<p>These options enable you to choose three different selections of accuracy as defined by how precise the GPS coordinates will be. The following shows you the options from the least to the most accurate.</p> <ul style="list-style-type: none"> • In the Cell only mode - low power and low accuracy

	<ul style="list-style-type: none"> • In the PDE (GPS + Cell) mode - medium power and high accuracy • In the Autonomous (GPS only) mode - high power and high accuracy <p>PDE (GPS + Cell) mode is the preferred mode and should be used when supported by your carrier.</p>
Timeout (minutes)	<p>This option tells the Capturx Mobile for BlackBerry how long to wait for a GPS lock before continuing with the send. Although new forms can be pushed to the client while waiting for a GPS lock, no items will be sent from the phone until a GPS lock is established or the timeout expires.</p> <p>Note: If the timeout is 0, the Capturx Mobile for BlackBerry will never wait for GPS; if it is available, it will be included, otherwise the item will be sent without waiting.</p>
Max re-use age (minutes)	<p>This option tells the Capturx Mobile for BlackBerry how old a GPS location can be before it is considered outdated. When a GPS location is needed, the Capturx Mobile for BlackBerry will first see if a GPS value is present that is younger than the Age value; if so, this cached location is used rather than trying to get a more recent location, possibly re-enabling GPS if it is set to On Demand mode.</p> <p>The GPS age can be set in 5 minute increments and should be set to the maximum age that is still within your requirements to avoid delay in sending items.</p>

Recommended Settings

Although you may choose any settings you desire, when using Capturx for ArcGIS, we recommend the following:

<p>GPS disabled:</p> <ul style="list-style-type: none"> • Power mode: Off • Timeout: N/A • Age: N/A • Used when GPS data is not needed 	<p>On Demand:</p> <ul style="list-style-type: none"> • Power mode: On-Demand • Timeout: 2 minutes or greater • Age: 10 minutes or greater • Used when GPS data is needed but battery life is a concern 	<p>GPS on:</p> <ul style="list-style-type: none"> • Power mode: On Always • Timeout: 0 minutes or greater • Age: 5 minutes or greater • Ideal setting if GPS data is needed and battery is not a concern
---	---	---

Using the Capturx Tools Options

The Capturx Tools menu enables you to access a dialog box that provides the following:

- The ability to exit the application
- Access to online help
- A Reset/Delete All function
- The option to Uninstall Capturx Mobile for BlackBerry
- The ability to send an Email to product support with a detailed usage log to help diagnose issues



Capturx Tools Option	How it is Used
Exit	Used to exit the Capturx mobility client
Help	Choosing Help invokes the phone's default browser, loading the following URL so you can view online help: http://www.adapx.com/ProductSupport/CapturxPenManager/BlackBerry/1.0/help/main.htm
Reset/Delete All	In certain technical support calls or cases, it may be necessary to reset the application to the factory defaults. Selecting Reset/Delete erases the task list and configuration files so that new versions are created on the next start-up. Note that this action results in the loss of all user data currently stored on the pen. If the you select Reset/Delete All, you will be presented with a confirmation dialog:



Note: Choosing Reset will erase the configuration information in persistent storage and the queue file, and exits the application. All of your data will be lost and the next time the application is restarted, you will need to re-accept the EULA and re-configure the application.

Uninstall

Choosing Uninstall causes the application to be removed. All your data is removed and the phone will prompt you to reboot:



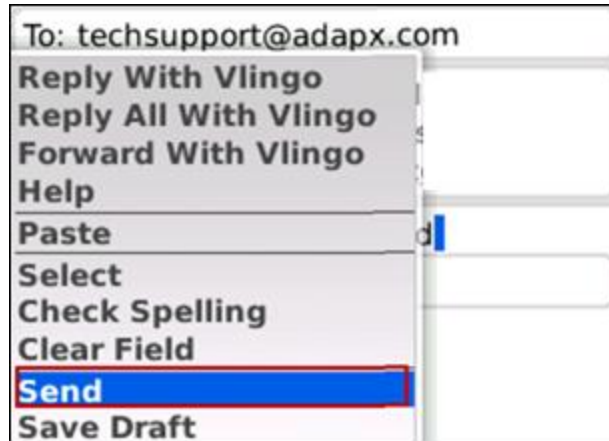
Email Product Support

Selecting Email Product Support causes a new email message to be generated that will be initialized with an attachment containing the service log. The service trace log contains the last 100 activity items.

When you send the trace log, the message is initialized with the trace log as an attachment, with the default recipient as techsupport@adapx.com. You should add any additional recipients and text as requested by tech-support.

To sent the email to product support:

1. Select the **Menu** button and choose **Send**. When the trace log is sent, it is also cleared.



As noted, you may alter the message by adding notes, recipients, etc.

