

2010

# Capturx Mobile for BlackBerry®

User Guide



## Contents

Using Capturx Mobile for BlackBerry .....	3
How to Run Capturx Mobile for BlackBerry .....	5
Using the Activity Screen .....	6
Using the General Configuration Options .....	8
Using the GPS Configuration Options.....	10
Using the Capturx Tools Options .....	13

## Using Capturx Mobile for BlackBerry

The following section outlines the requirements and general process for using Capturx Mobile with your BlackBerry.

### What you need

The Mobile Client can be installed on a [compatible BlackBerry device](#) with version 4.3 or greater (4.5+ recommended) of the BlackBerry (RIM) OS and an active email account.

### Using the Capturx Mobile for BlackBerry Overview

The following steps show you how Capturx Mobile for BlackBerry fits into the overall process of using your pen to gather and upload data:

1. Pair the pen with your BlackBerry.
2. Use the [General Configuration](#) options to select the destination and upload method.
3. With Capturx software, print your map, form, or PDF file.
4. Use your paired digital pen to write on the Capturx printout.
5. Use the digital pen to select the **Send Pen Data to Phone** box on the Capturx Pen Utility Card to send digital ink to your BlackBerry.

### The file created on the pen

The files created on the pen do not require much memory, and single pages tend to be only a few kilobytes in size. The client is installed on the BlackBerry and remains running in the background -- waiting for data to route. If the client is not active, the pen will respond by "buzzing" when you attempt to upload the data to the BlackBerry. You will not lose any data – the data remains safely in the pen until the client can be reactivated and you re-try the upload.

### Pairing the BlackBerry with the pen

Your pen must be Bluetooth enabled to pair with your BlackBerry. Although your pen was shipped to you with Bluetooth turned on, you can check by reviewing the Bluetooth status box in the Pen Docking section of the Capturx Pen Manager installed on a PC.

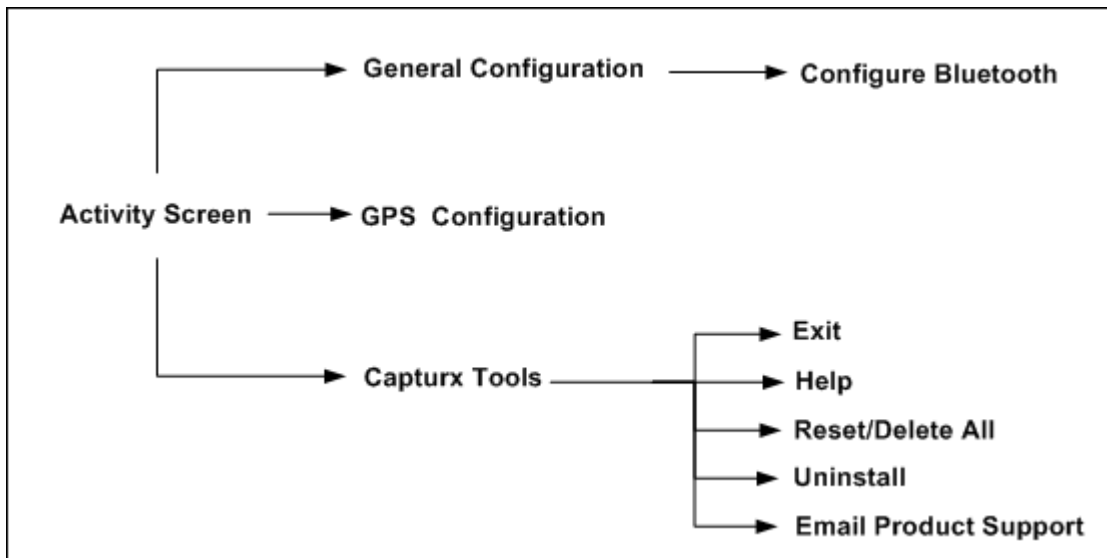


In order to use the digital pen with the BlackBerry, the pen and the phone must be "paired". This pairing is done when a new pen is to be used. A phone can be paired with multiple pens. A pen can only be paired multiple BlackBerries, but the pairing process has to be done one at a time. device at a time. See [Using the General Configuration Options](#) for instructions on how to pair the pen with the BlackBerry.

Capturx Mobile for BlackBerry has four main screens

- **The Activity Screen**  
This screen is the main screen that shows a log of recent activity with a date and time stamp. The last 30 items are retained. From here, you can access the General Configuration screen, the GPS Configuration screen, and the Capturx Tools dialog.
- **The General Configuration Screen**  
This screen is used to enter user and connection information that the application requires to send data to a server or via email.
- **The Global Positioning System (GPS) Configuration Screen**  
This is where you set the GPS mode and other GPS parameters.
- **The Capturx Tools Dialog**  
This dialog provides you with tools and options for working with and supporting Capturx Mobile for BlackBerry.

The following figure shows these screens and how they are related:



The following topics will help you become familiar with Capturx Mobile for BlackBerry and how it is used:

[How to Run Capturx Mobile for BlackBerry](#)

[Using the Activity Screen](#)

[Using the General Configuration Options](#)

[Using the GPS Configuration Options](#)

[Using the Capturx Tools Options](#)

## How to Run Capturx Mobile for BlackBerry

To run the Capturx Mobile for BlackBerry application:

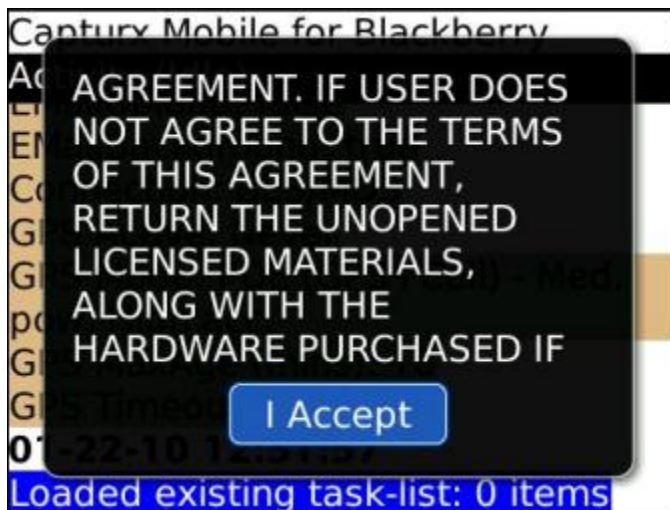
1. Select the **Download Folder**. The icon is contained in this folder. The following screens show the folder and the icon as current and about to be selected:



2. Since Capturx is accessing Bluetooth, the first time you start your phone after the Capturx Mobile for BlackBerry is installed, you will be asked if you want to grant our application full trust. Select **Yes**.
3. When the client first runs, you may be asked to enable Bluetooth (even if Bluetooth is already enabled). Select **Yes**.



4. You will be presented with the End User License Agreement. You must accept this agreement to run the application. Review the terms and select **I Accept** to continue.

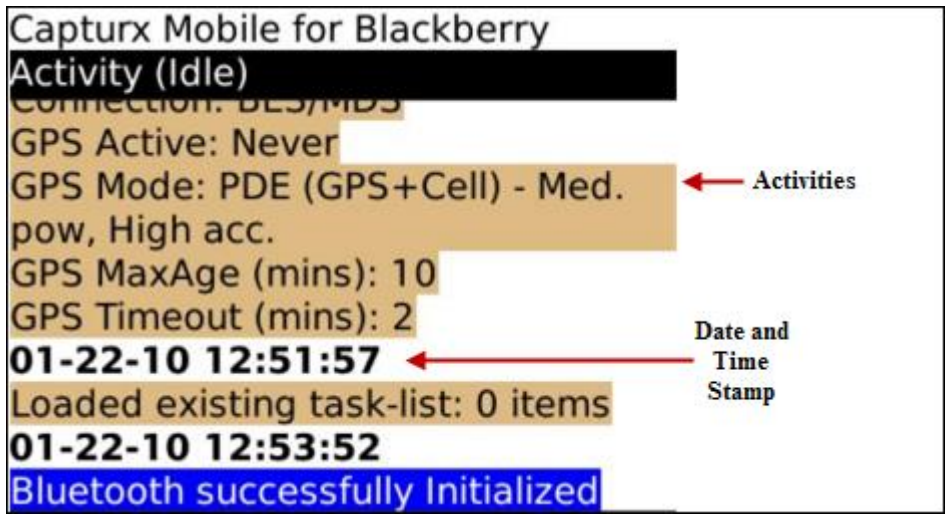


You can now access the Capturx Mobile for BlackBerry screens and options.

## Using the Activity Screen

The Activity Screen is the main screen for Capturx Mobile for BlackBerry, and the first screen shown when the application is brought to the foreground. The General Configuration, GPS Configuration and Capturx Tools options are accessible from this screen.

The Activity Screen shows a log of the last 30 activity items, and each item is preceded by the local date and time. You can scroll through these items to view the activities performed with the Capturx Mobile for BlackBerry and when these activities were performed.

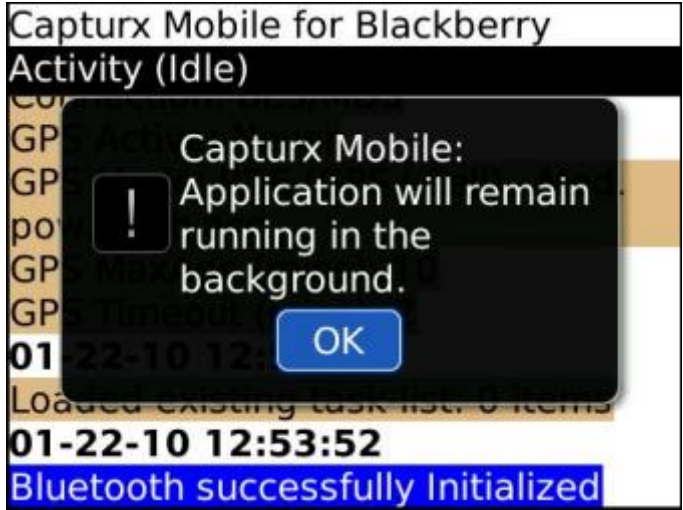


Note: An activity item can contain more than one line, and adjacent items with identical text are coalesced as shown below. Items that begin with the string "GPS:" are also coalesced in this manner.

GPS Mode: PDE (GPS+Cell) - Med. pow, high acc  
 Loaded existing task-list: 0 items  
 Loaded existing task-list: 0 items  
 Loaded existing task-list: 0 items

**Will appear as:**  
 GPS Mode: PDE (GPS+Cell) - Med. pow, high acc  
 Loaded existing task-list: 0 items  
 Repeat:3

Note: If you exit the activity screen by using the Back button from the Configuration screen, the following screen displays to show you the application is still running in the background:



## Using the General Configuration Options

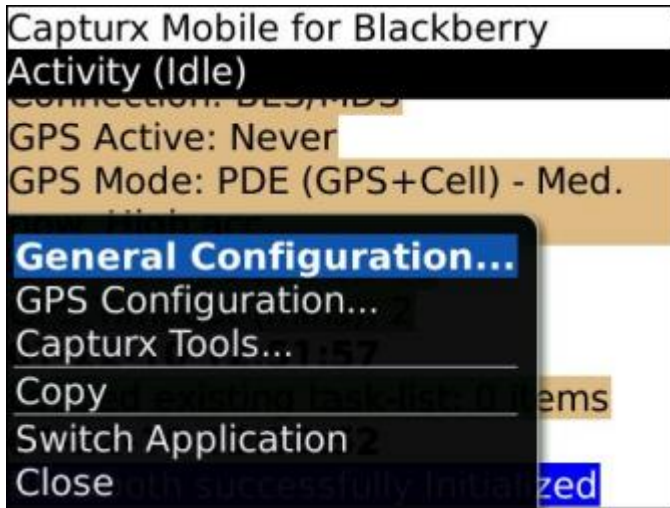
The General Configuration screen allows you to change the following settings:

- The server URL for the destination of your pen data
- Login Name and Password for the server
- The email account for the destination of your pen data -- if you are not sending to a server.
- The upload method for sending your data
- Checkbox if you want to view and edit your email before sending.

You use this screen to select either Server or Email for your upload option.

To access the General Configuration screen:

1. Press the **Menu** key.
2. Select **General Configuration**.



This will open the General Configuration screen

Capturx Mobile
Configuration
<b>Server URL:</b> <a href="https://cfs.capturx.com">https://cfs.capturx.com</a>
<b>Login Name:</b> capturx17
<b>Password:</b> *****
<b>Email:</b> email@email.com
Upload method: Capturx Mobile Server & Email
<input type="checkbox"/> Edit email before sending:

If you want to send pen data to a server, the mobile client needs to know the address, login name, and password for your Capturx Forms Server mobile upload service. (If you are unsure of this setting, please see the administrator who provided your Capturx installation.)

To specify the Capturx Forms Server URL, Login Name, and Password:

1. Scroll to the field.
2. Enter the information.

If you want to send pen data to an email recipient, the mobile client needs his/her email address.

To specify the recipient email address:

1. Scroll to Email field
2. Enter the recipient email address.

To specify the upload method you want to use with your data:

1. Scroll to upload method drop-down menu.
2. Select the **Capturx Mobile Server & Email** if you want to send pen data to a server or **Email** if you want to email pen data to a recipient.

If you are using Adapx's Capturx for SharePoint product, select **Capturx Mobile Sever & Email**; if you are using an Adapx desktop product, choose **Email**.

You can also select the **Open email before sending** to edit the message before it is sent. This email can be used for additional notes or attachments.

### **Pairing Bluetooth with Your Pen**

In order to pair a BlackBerry device with the digital pen, the Bluetooth device must be in pairing mode. Most Bluetooth devices are not set to pairing mode by default.

1. Uncap your pen. When the pen is first uncapped, it is "discoverable" in paring mode.
2. On the BlackBerry device, from the home screen, access the **Setup Bluetooth** option. Select **Listen** or **Search** to search for the digital pen signal.
  - Note: If you select Search, it will take time for the Select Device list to appear. This list shows the devices that are in range and available to be paired.
3. If you selected Listen, use the Capturx Pen Utility Card and check the **Bluetooth Pair with Phone** checkbox found on the back of the card.
  - Once the two devices sync, the Bluetooth device list appears.
4. Select digital pen device name, "DP-201".
5. A dialog appears requesting **Enter Numeric Pass Key**. Enter the 4 digit pin number of the digital pen as seen in the Capturx Pen Manager or the printed sticker supplied with the pen.

Note: if you don't see the pen in the list of devices, cap and uncap the pen again so it will set itself to be discoverable and refresh the list of devices on the BlackBerry.

## Using the GPS Configuration Options

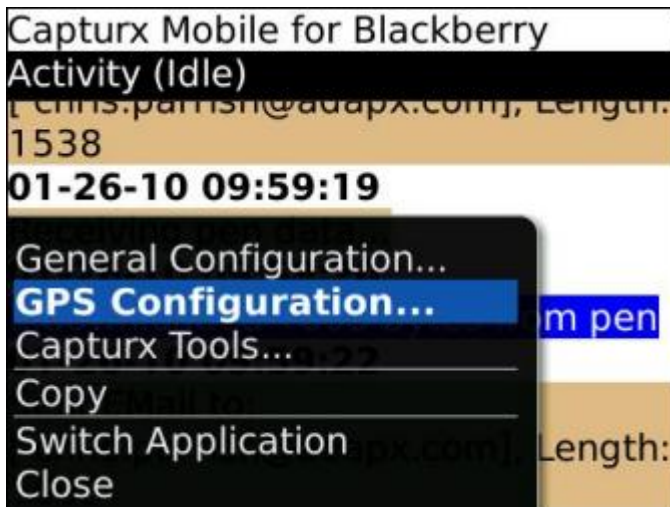
The Global Positioning System (GPS) is a group of Earth-orbiting satellites that allows you to determine the time and the longitude and latitude coordinates for where you were when you uploaded a form to the Capturx for SharePoint server.

The Capturx Mobile for BlackBerry supports GPS by placing GPS location coordinates in your uploaded data based on the GPS settings you have selected. Several settings affect the operation of GPS. The following topic takes you through the GPS Configuration options and provides a list of recommended settings.

Use the GPS Configuration screen to view and change GPS settings.

To access the GPS Configuration screen:

1. Press the **Menu** key.
2. Select **GPS Configuration**.



This will open the GPS screen that allows you to set the GPS-specific options and values.

Capturx Mobile	
GPS Configuration	
Active:	Never
Mode:	Medium accuracy / med battery usage
Timeout (mins):	2
Max re-use age (mins):	10

GPS Screen Options	How It Is Used
Active	<p>The Active option enables you to choose three different selections:</p> <ul style="list-style-type: none"> <li>• In the <b>Never</b> mode, the GPS unit is only activated if it is being used by another application. Whether the GPS unit is active or not, no location information is sent when set to "Never" mode.</li> <li>• In <b>On Demand</b> mode, the GPS unit is only activated when the application requires GPS information because new ink records are uploaded to the phone and an ink record is about to be sent. Since a GPS lock can take between 30 seconds and several minutes, using this mode can delay the sending of items.</li> <li>• In <b>Always</b> mode, the application keeps GPS active all the time. Since this mode can drain the battery, you may prefer to use On Demand mode instead.</li> </ul> <p>Note: If you require a GPS location, you should choose Always, unless this selection would drain your battery. By choosing Always, you have the best chance of having a current or recent GPS signal (even if one is not available at send-time), so ink can be sent immediately without waiting for a GPS lock. Choosing On Demand conserves the battery, but can cause the application to wait until a signal is received, up to the timeout. When the GPS is Disabled or off, no location data will be associated with your forms.</p>
Mode	<p>These options enable you to choose three different selections of accuracy as defined by how precise the GPS coordinates will be. The following shows you the options from the least to the most accurate.</p> <ul style="list-style-type: none"> <li>• Low accuracy and low battery mode - Cell only</li> <li>• Medium accuracy and medium battery - PDE (GPS + Cell)</li> <li>• High accuracy and high battery - Autonomous (GPS only)</li> </ul> <p>PDE (GPS + Cell) is the preferred mode and should be used when supported by your carrier.</p>
Timeout (minutes)	<p>This option tells Capturx Mobile for BlackBerry how long to wait for a GPS lock before continuing with the send. Although new forms can be pushed to the client while waiting for a GPS lock, no items will be sent from the phone until a GPS lock is established or the timeout expires.</p> <p>Note: If the timeout is 0, Capturx Mobile for BlackBerry will never wait for GPS. If GPS data is available, it will be included; otherwise the item will be sent without waiting.</p>
Max re-use age	<p>This option tells Capturx Mobile for BlackBerry how old a GPS location can be before it is considered outdated. When a GPS location is needed,</p>

(minutes)	<p>Capturx Mobile for BlackBerry will first see if a GPS value is present that is younger than the Age value; if so, this cached location is used rather than trying to get a more recent location, possibly re-enabling GPS if it is set to On Demand mode.</p> <p>The GPS age can be set in 5 minute increments and should be set to the maximum age that is still within your requirements to avoid delay in sending items.</p>
-----------	--

**Recommended Settings**

Although you may choose any settings you desire, we recommend the following:

<p><b>GPS disabled:</b></p> <ul style="list-style-type: none"> <li>• Power mode: Off</li> <li>• Timeout: N/A</li> <li>• Age: N/A</li> <li>• Used when GPS data is not needed</li> </ul>	<p><b>On Demand:</b></p> <ul style="list-style-type: none"> <li>• Power mode: On-Demand</li> <li>• Timeout: 2 minutes or greater</li> <li>• Age: 10 minutes or greater</li> <li>• Used when GPS data is needed but battery life is a concern</li> </ul>	<p><b>GPS on:</b></p> <ul style="list-style-type: none"> <li>• Power mode: On Always</li> <li>• Timeout: 0 minutes or greater</li> <li>• Age: 5 minutes or greater</li> <li>• Ideal setting if GPS data is needed and battery is not a concern</li> </ul>
---	---	---

## Using the Capturx Tools Options

The Capturx Tools menu allows you to:

- The ability to exit the application
- Access to online help
- A Reset/Delete All function
- The option to Uninstall Capturx Mobile for BlackBerry
- The ability to send an Email to technical support with a detailed usage log to help diagnose issues



Capturx Tools Option	How It Is Used
Exit	Used to exit the Capturx Mobile client
Help	Choosing Help invokes the BlackBerry's default browser, loading the following URL so you can view online help:  <a href="http://www.adapx.com/WebHelp/CapturxMobileForBlackBerry/Help/">http://www.adapx.com/WebHelp/CapturxMobileForBlackBerry/Help/</a>
Reset/Delete All	In certain technical support calls or cases, it may be necessary to reset the application to the factory defaults. Selecting Reset/Delete All erases the task list and configuration files so that new versions are created on the next start-up. Note that this action results in the loss of all user data currently stored on the BlackBerry. If you select Reset/Delete All, you will be presented with a confirmation dialog:



Note: Choosing Reset will erase the configuration information in persistent storage and the queue file, and exits the application. All of your data will be lost and the next time the application is restarted, you will need to re-accept the EULA and re-configure the application.

Uninstall

Choosing Uninstall causes the application to be removed. All your data is removed and the phone will prompt you to reboot:



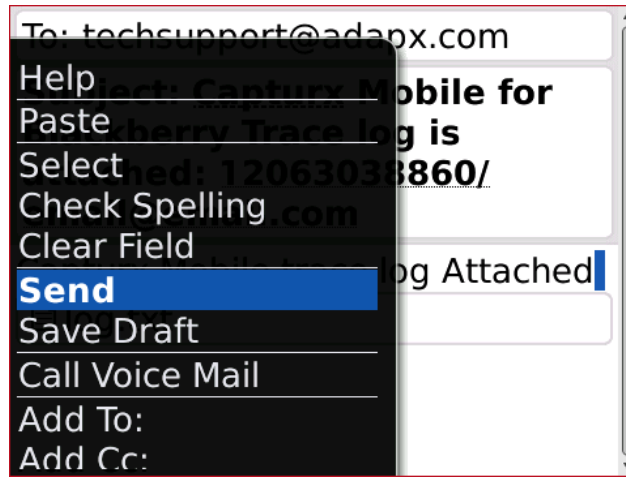
Email Technical Support

Selecting Email Technical Support causes a new email message to be generated that will be initialized with an attachment containing the service log. The service trace log contains the last 100 activity items.

When you send the trace log, the message is initialized with the trace log as an attachment, with the default recipient as techsupport@adapx.com. You should add any additional recipients and text as requested by tech-support.

To sent the email to product support:

1. Select the **Menu** button and choose **Send**. When the trace log is sent, it is also cleared.



As noted, you may alter the message by adding notes, recipients, etc.

